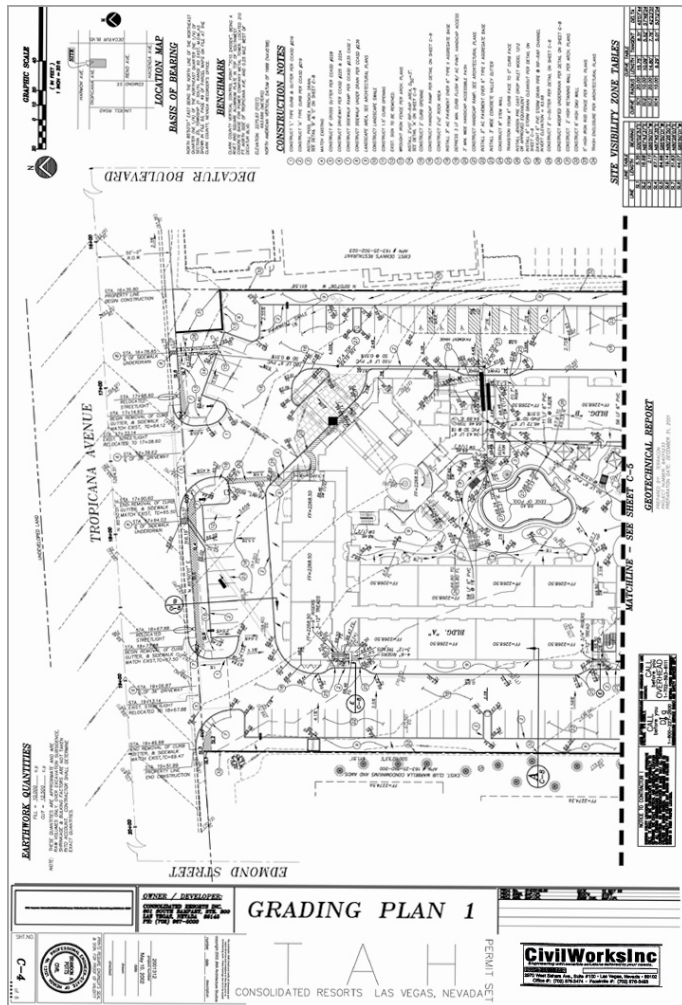


Multi-Family



Completed view of The Tahiti Resort on Tropicana, Las Vegas, NV



Grading Plan for The Tahiti on Tropicana Las Vegas, Nevada

CivilWorksInc¹ has had the opportunity to be involved in the Civil Engineering Design, Site Improvements Plans, and Agency Processing of "**Multi-Family**" facility in the Las Vegas Valley including:

-Barclay Square @ Cambridge	Las Vegas, NV
-Condo Conversion @ Del Rey	Las Vegas, NV
-Cosmopolitan Towers @ Western	Las Vegas, NV
-Emerald Suites @ Cameron	Las Vegas, NV
-Ernie Craig Terrace @ Post	Las Vegas, NV
-FAA Applications @ Warm Springs	Las Vegas, NV
-Greenwood Townhomes @ Royal	Las Vegas, NV
-Kennedy Tower @ Flamingo	Las Vegas, NV
-LEED Certification @ Durango	Las Vegas, NV
-Madison Towers @ Paradise	Las Vegas, NV
-Nunez Condos @ Koval & Albert	Las Vegas, NV
-Renzi Towers @ Charleston & 3rd	Las Vegas, NV
-Rome Park @ Decatur & Rome	Las Vegas, NV
-Soleil @ Tropicana & Decatur	Las Vegas, NV
-Tahiti Village @ Las Vegas Blvd	Las Vegas, NV
-The Tahiti Resort @ Tropicana	Las Vegas, NV
-Washington Federal @ Marks	Las Vegas, NV

"Sensible" Solutions...

Timeliness, Accuracy, and Budget are the critical watchwords in the provision of civil engineering services for all of our "**Multi-Family**" facilities.

CivilWorksInc¹ focuses on these areas when providing Civil Engineering services for the preparation and delivery of drawings for the processing and construction of these new installations.

"**Timeliness**" means within (30) work-days of authorization a "Complete" set of Engineering Plans including: Topographic & Boundary Surveys, Horizontal Control, Grading, Utility, Sections, and related Details are ready for necessary Public Works review and approvals.

In addition, Timeliness is the ability to coordinate with Public Works' various departments including: Land Development, Flood Control, Traffic, and Fire, as well as, the (04) Utility entities.

"**Accuracy**" to us includes the attention to Dimension, Calculation, and Detail necessary for

CivilWorksInc¹

(continued on back)

the project development and construction of a "**Multi-Family**" facility.

"**Budget**" by our definition, provides for positive review, research, and analysis of the Client's project to insure the maximum value for the least cost.

Tailored to your "Specific" needs...

Business Development Professional (BDP), Brandon A. Potts, has over (15) years of Business Development experience. Mr. Potts is relentless in his pursuit of total client satisfaction.

Clients have come to depend upon him as though part of their own staff. Brandon works closely with the client, the client staff, and **CivilWorksInc** project managers to assure the clients needs are communicated, understood, and met.

CivilWorksInc has an exceptional understanding of "**Multi-Family**" facility developers, users, and their needs, and has an energy and dedication to help you succeed.



Our **CivilWorksInc** team ready to serve YOU on your next project!

Call BRANDON A. POTTS, P.E.

@ (702) 876-3474 or email

bap@civilworksonline.com

**for a "FREE" consultation and
get your project started today!**