

Educational Facilities

School "Growth" and You...

The challenge of Clark County School District's **Kathy L. Batterman Elementary School** project, was to design an educational facility, roughly 75,000 square feet, on 15 acres, whose surrounding conditions consisted of a 300' wide and 10' deep earthen flood channel. The site was currently being removed from a 100-year flood zone by the Clark County Regional Flood Control District .

Extensive coordination was required between adjacent developers and the design team on this project. The existing channel had to be filled, and the flood water needed to be routed around the site.

Adding to the challenge was to complete the design and construction by August 2005, when the new school year begins. Through constant and cohesive teamwork among the design, architectural, geotechnical, and civil engineering teams, including the Clark County School District and adjacent owners; the facility will, indeed, open its doors on schedule.

CivilWorksInc² applies this same effort and sense of responsibility to every Clark County School District projects it touches. ***"They have kept our projects on target, and we recommend them to others,"*** says E. Dale Scheideman, CCSD Director of the New School & Facility Planning Department.

So how did CivilWorksInc² do it? By simply **"Doing What We Do Best"** as described below...

"Sensible" Solutions...

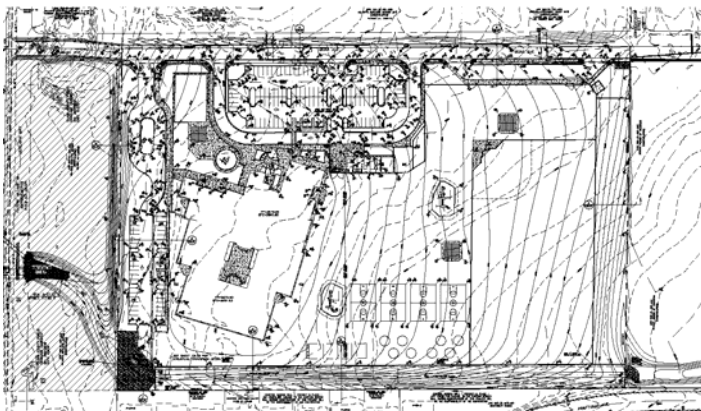
Timeliness, Accuracy, and Budget are the critical watchwords in the provision of civil engineering services for the **Educational Facilities**. **CivilWorksInc²** focuses on these areas when providing civil engineering services for the preparation and delivery of drawings for the processing and construction of new building and renovation projects alike.

"Timeliness" means within (30) work-days of authorization a "Complete" set of Engineering Plans including: Topographic & Boundary Surveys, Horizontal Control, Grading, Utility, Sections, and related

Details are ready for necessary Public Works review and approvals. In addition, Timeliness, in our opinion, is the ability to coordinate with Public



A view of the site where the new Kathy L. Batterman Elementary School is being built @ Hualapai & Quail, Las Vegas, Nevada



Grading Plan designed for the Kathy L. Batterman Elementary School



Completed Project of Kathy L. Batterman Elementary School

CivilWorksInc²
Engineering with "sensible" solutions tailored to your "specific" needs.

7625 Dean Martin Drive, Suite #101 • Las Vegas, NV 89139-5975
Office: 702.876.3474 • Facsimile: 702.876.1323

Works' various departments including: Land Development, Flood Control, Traffic, Fire, and the (4) Utility entities.

"**Accuracy**" to us includes the attention to Dimension, Calculation, and Detail necessary for the development and construction of an "**Educational Facility**".

"**Budget**" by our definition, provides for positive review, research, and analysis of the your project to insure the maximum value for the least cost.

Tailored to your "**Specific**" needs...

Business Development Professional (BDP), Tyler Johnson has over (09) years of engineering consulting experience working in the West. Mr. Johnson is relentless in his pursuit of total client satisfaction. Clients have come to depend upon him as though part of their own staff.

Tyler works closely with the client, the client staff, and **CivilWorksInc²** project managers to ensure that your needs are communicated, understood, and met.

CivilWorksInc² has an exceptional understanding of **Educational Facilities** and has an energy and dedication to help you succeed.



Business Development Professional, Tyler W. Johnson, ready to provide client services tailored to your "**specific**" needs.

Call TYLER W. JOHNSON
@ (702) 876-3474 or email
twj@civilworksonline.com
for a "FREE" consultation and
get your project started today!