

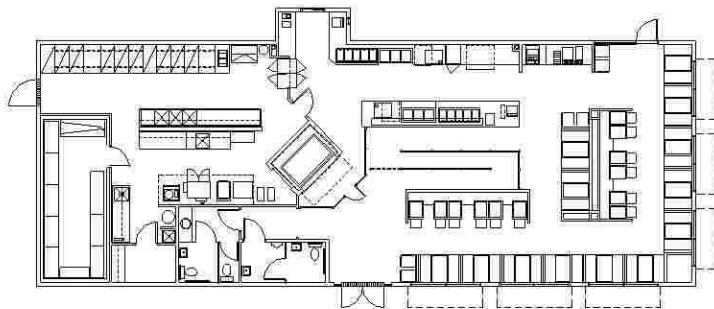


Gary Guy Wilson Architect Studios has had the opportunity to be involved in the design, planning, development, and construction of "*Kenny Rogers ROASTERS*" restaurants throughout the west including:

-KRR @ Boulder Station	5000s.f.	Las Vegas, Nevada
-KRR @ Cheyenne Commons	3850 s.f.	Las Vegas, Nevada
-KRR @ Westland Faire Mall	5525 s.f.	Las Vegas, Nevada
-KRR @ West Sahara	4173 s.f.	Las Vegas, Nevada
-KRR @ MGM Theme Park	10000 s.f.	Las Vegas, Nevada
-KRR @ Palo Verde	4086 s.f.	Lake Havasu, AZ
-KRR @ Kilby Road	4086 s.f.	Park City, Utah



An view of "Kenny Rogers Roasters @ Cheyenne Commons Shopping Center" located in Las Vegas, Nevada.



Proposed floor plan for "Kenny Rogers Roasters @ Palo Verde" located in Lake Havasu, Arizona.



A view of "Kenny Rogers Roasters @ Westland Faire Mall" located @ Decatur Blvd. & Charleston Ave. in Las Vegas, Nevada.

Timeliness, Accuracy, and Budget are the critical watchwords in the provision of architectural services for the Kenny Rogers Roasters facilities. GGW Architect Studios focuses on timeliness, accuracy, and budget when providing architectural services for the preparation and delivery of drawings for the processing and construction of new Kenny Rogers Roasters installations.

Timeliness to us means quick turnaround for expediting all elements of the project development process to accommodate the clients needs. Timeliness means within (2) days of client authorization a prototype floor plan and elevations are ready for submittal to KRR, Corporate for approval and preparation of equipment plans. Design development plans, elevations, and construction systems layouts are ready for approval within (1) week. Final construction plans, elevations, details, specifications, and building engineering, also (1) week.

Accuracy results from continuous study, management, and update of standard and prototype information from which the



designs and documents for your specific project are prepared. Accuracy also results from contacting local officials, to identify local variables, and from managing coordination with site specific engineering concerns.

Budget, by this definition means that where there are choices to be made in construction systems, materials, and details, that GGW Architect Studios provides positive review, research, and analysis to provide the maximum value for the least cost.

Gary Guy Wilson Architect Studios has an understanding for "*Kenny Rogers ROASTERS*" clients and their needs and has an energy and dedication to help you succeed.

Call **G. Cash Wilson**, your Client Service Representative,
@ (702) 876-0668 and get started today.