

bility to a growing market and create a greater variety of activities and services.

Next, as a separate building, the "Slots-A-Fun" casino was added at a front curb-side location to encourage walk-in patronage.

Lastly, in keeping with a strategy of ongoing growth and development and to better service the increasing number of visitors, a cantilevered front entry porte' cochere was added along with an expanded midway casino and hotel registration area.

Other Solutions:

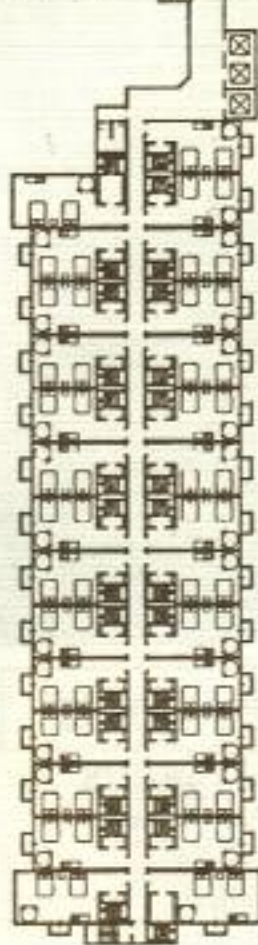
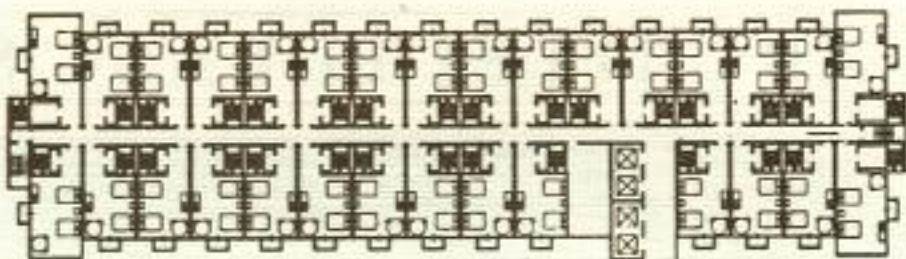
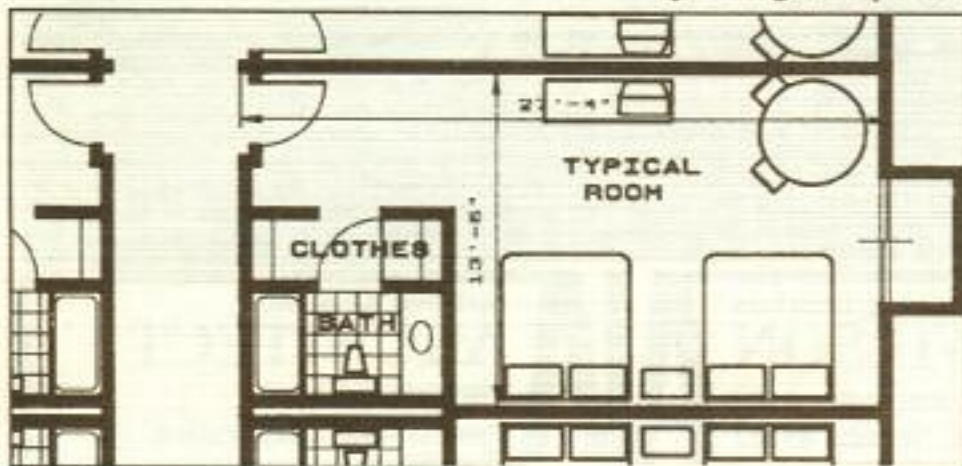
Aladdin Hotel
 Astro Hotel
 Burro Inn
 Cambridge Towers
 Camelot Hotel
 Casablanca Hotel & Casino
 Cattle Baron Casino
 Circus Circus Hotel
 Circus Circus Casino Expansion
 Circus Circus High-Rise Phase I
 Circus Circus High-Rise Phase II
 Circus Circus Porte' Cochere
 Club Royale Casino
 Colony 6 Motel
 Desert Pier Ramada Inn
 Dunes Hotel Renovation
 Dunes Hotel Towers
 Edgewater Hotel
 Indian Springs Motel & Casino
 McCarran International Hotel
 O.K. Corral Inn

Royal Inn Casino
 Sawyer's Ramada Inn
 Silver Bird Hotel Renovation
 Silver City Casino Expansion
 Silver Nugget Expansion
 Slots-A-Fun Casino
 Thunderbird Hotel & Casino
 Timber Bridge Inn
 Tropicana West
 United Hostel Motel
 Vale Motel



The Advantage:

The firm of Gary Guy Wilson Architecture/Planning/Interiors has known for 19 years the importance of unique design, full profes-



sional services and "getting-it-done-now," all at a competitive price.

Designing for an enhanced image and planning for efficiency of operation is paramount.

As a conductor must direct the orchestra, the architect must orchestrate many services and the input of various participants to bring the design project to a successful conclusion.

All must be done "on time." Time is Money, the interest clock ticks, carrying costs climb and lost revenue builds.

Our highly systematic approach to developing designs, documents and dispensing services utilizing the latest in CADD technology means consistent tracking, documenting and attention to detail.

Inevitable changes are handled quickly and without duplication of effort.

Our staff is accustomed to meeting your needs on your schedule and budget.

For additional information call our Client Services Representative, G. Cash Wilson at (702)876-0668.